

Showground PIC number:  
NA171290

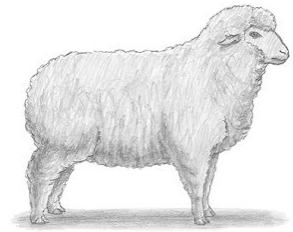
# SHEEP SECTION

Wednesday 16<sup>th</sup> May 2019

## Conditions of Entry

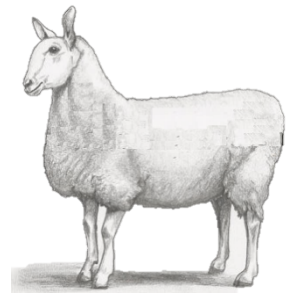
### **Flock Merino** – Steward: Simon Ibbott

- Sheep to be penned by 9am on the Second day of the show
- Exhibitors breeding rams for sale excluded from the section
- Competitors not restricted to distance from Coonamble
- Date of shearing to accompany entries.
- Sheep for this section to be taken straight from paddock and given only normal paddock grazing feed.
- Sheep for single entries may be drawn from pens
- Class 7 may not be drawn from class 8 and vice versa
- Shorn Classes – Shorn within 12 months of show



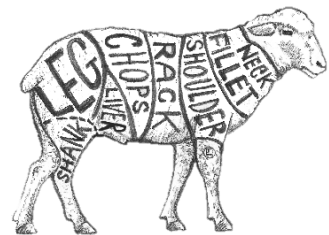
### **British Breeds** – Steward: Brett Wilson

- Sheep to be entered by owner, except where stated
- All entries to be drawn from registered flocks.
- Border Leicester shorn sheep to have no more than 4cm of wool
- White Suffolk to have no more than 3cm of wool
- Current Footrot and Brucellosis Accredited Certificate – must be sighted prior to unloading.
- Perpetual Trophies always remains the property of the Coonamble Show Society Incorporated. Winner will hold the trophy for presentation to the next Coonamble show



### **Prime Lamb** – Steward: Danny Keady

- Competitors enter at their own risk.
- Check with stewards for parking and unloading.
- Entries pens of 3
- All lambs to be penned by 9:30am
- All lambs must have milk teeth
- Entries to be weighed by stewards and put into classes
- Entries will be judged from 10.00am Wednesday
- All entries require sheep health statements



**Coonamble Show Society inc. would like to thank all our valued Sponsors, Agents, Producers and Judges for their support in our 2019 Sheep Section.**

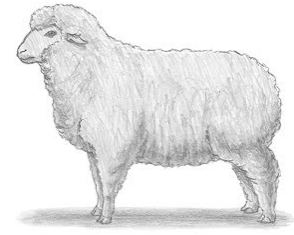
# FLOCK MERINO SHEEP

**Steward:** Simon Ibbott - 68256208

**Entry fee** \$2 for each class

**Conditions – See Sheep Section Cover Page**

**Shorn Classes** – Shorn within 12 months of show



## **Medium Wool**

1. Ewe, 2 tooth, milk tooth eligible
2. Ewe, 4 tooth
3. Ewe, 6 or 8 tooth

***Champion and Reserve Champion Medium Wool Ewe***

## **Strong Wool**

4. Ewe, 2 tooth, milk tooth eligible
5. Ewe, 4 tooth
6. Ewe, 6 or 8 tooth
7. **Champion 2 Tooth Ewe**

***Champion and Reserve Champion Strong Wool Ewe***

***Grand Champion Flock Merino Ewe***  
*Trophy & \$150 Proudly Donated by Wyuna Merino Stud*

## **8. Pen of 3 Merino Ewes**

*Any age any shearing to be judged on confirmation and evenness of wool type*  
**\$100 prize proudly sponsored by the Ibbott family**

# BRITISH BREEDS

Steward: Brett Wilson - 0268222518

Conditions – See sheep section cover page



## BORDER LEICESTERS – WOOLLY CLASSES

- |                                      |                                      |
|--------------------------------------|--------------------------------------|
| 1. Ram, Over 1 year                  | 4. Ewe, Over 1 year                  |
| 2. Ram, Under 1 year                 | 5. Ewe, Under 1 year                 |
| 3. Pair of Rams under 1 year, woolly | 6. Pair of Ewes under 1 year, woolly |

**Champion & Reserve Champion Woolly Ram**

*Trophy donated by Town & Country Insurance Brokers, Dubbo*

**Champion & Reserve Champion Woolly Ewe**

*Trophy donated by Landmark*



## BORDER LEICESTERS- SHORN CLASSES

- |                              |                               |
|------------------------------|-------------------------------|
| 7. Ram - Over 1 year         | 10. Ewe - Over 1 year         |
| 8. Ram - Under 1 year        | 11. Ewe - Under 1 Year        |
| 9. Pair of Rams Under 1 Year | 12. Pair of Ewes Under 1 Year |

**Champion & Reserve Champion Shorn Ram**

*Trophy donated by Elders Rural Services.*

**Champion & Reserve Champion Shorn Ewe**

*Trophy Donated by TBA*

## WHITE SUFFOLK

13. Ram - Over 1 year
14. Ram - Under 1 year
15. Ewe - Over 1 year
16. Ewe - Under 1 Year

**Champion & Reserve Champion White Suffolk Ram**

*Trophy donated by TBA*

**Champion & Reserve Champion White Suffolk Ewe**

*Trophy Donated by TBA*

**Best Group Woolly Border Leicesters**-One ram and two ewes not over one year old.  
*~The Brigendoone Perpetual Trophy F&I Cameron. & \$150~*

**Best Group Shorn Border Leicesters**-One ram and two ewes not over one year old.  
*~The Charlie Nixon Perpetual Trophy & \$150~*

**Best Group Interbreed** -One ram and two ewes not over one year old.  
*~Trophy Proudly Donated by Dennis Todd~*

**Junior Handlers** - School Ages - 1<sup>st</sup>, 2<sup>nd</sup> 3<sup>rd</sup> Placing's

**Most Successful Exhibitor**- Point System-1<sup>st</sup> 3 points, 2<sup>nd</sup> 2 points, 3<sup>rd</sup> 1 point, Champion 2 points, Reserve 1 point

*~ Trophy Proudly Donated by Jacksons Freightliners*

**~GRAND CHAMPION RAM~**

*Proudly Sponsored by Castlereagh Stud Trophy: C Wilson*

**~GRAND CHAMPION EWE~**

*Proudly Sponsored by Schute Bell, Newcastle*

# PRIME LAMB COMPETITION

**STEWARDS: Danny Keady: 0407298037**

**Entry fee: \$5.00**

**LPA NATIONAL VENDOR DECLARATION AND ANIMAL HEALTH STATEMENT**

**Conditions: - See Sheep Section Cover Page**

1. Pen of three trade lambs 43-50kg Liveweight 1<sup>st</sup> prize ribbon  
2<sup>nd</sup> prize ribbon
2. Pen of three lambs 50.1kg Liveweight and over 1<sup>st</sup> prize ribbon  
2<sup>nd</sup> prize ribbon

## **Champion & Reserve Champion Pen of Lambs**

*Ram Donated by Kanoona Park Stud,  
Ribbon and Trophy donated by Stratton Family "Ninegear"*

## **Champion & Reserve Champion Pen of Lambs**

*\$100 Prize money and Ribbon*

**THE COONAMBLE SHOW SOCIETY WOULD LIKE TO THANK ALL  
THE SPONSORS, PRODUCERS, AGENTS AND JUDGES FOR  
SUPPORTING OUR SHEEP PAVILION.**

